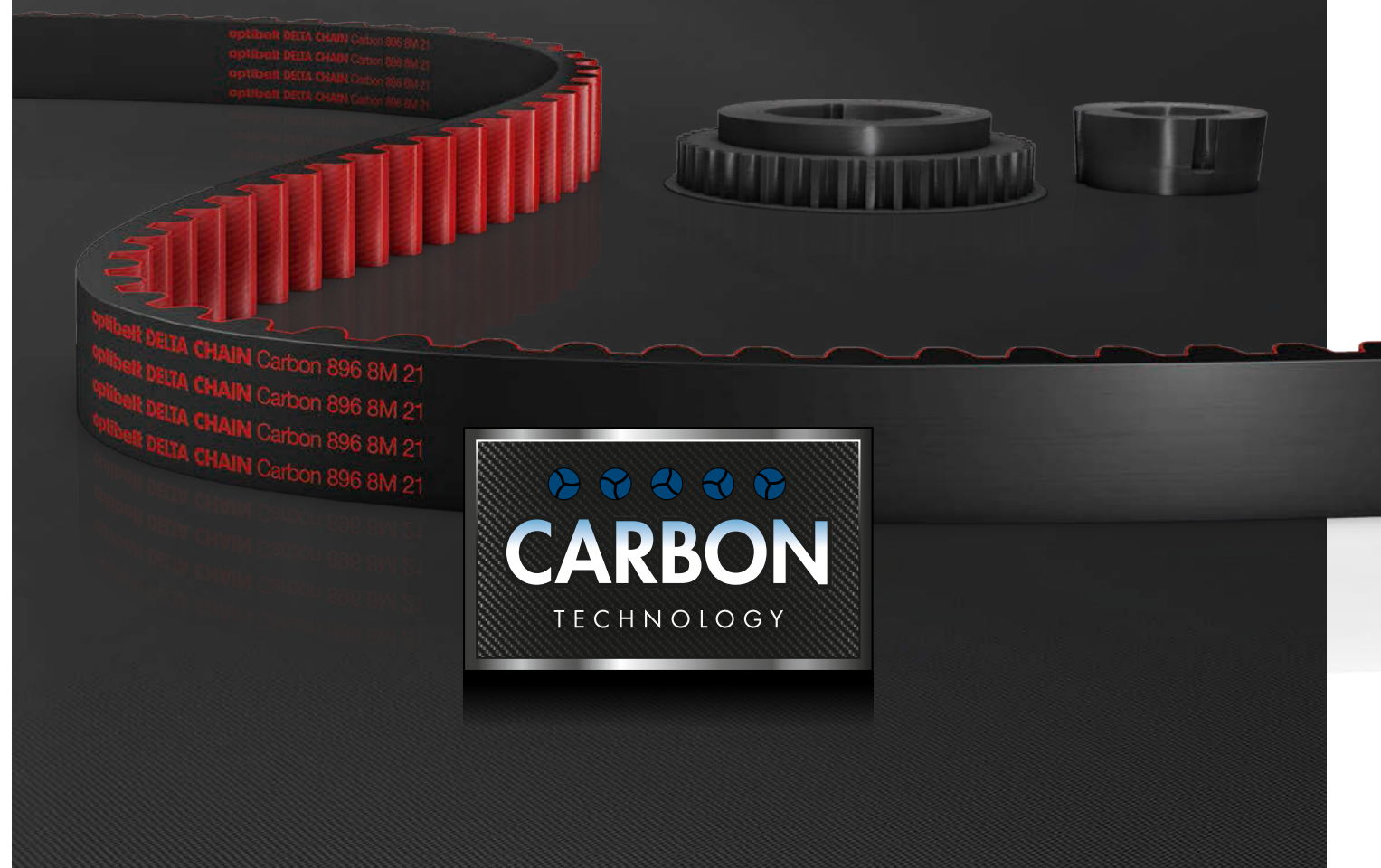




POWER TRANSMISSION

# optibelt **DELTA CHAIN** Carbon



HIGH PERFORMANCE TIMING BELTS

# DELTA CHAIN Carbon

The **optibelt DELTA CHAIN Carbon** is a new high performance timing belt that sets standards in the market. Up to 100% higher power transmission is possible compared to high performance rubber timing belts.

The overall width of the drive can therefore be considerably reduced. The particular focus here is placed on drives with very high torques.



The **optibelt DELTA CHAIN Carbon** was designed for high torques and delivers high performance even in extreme use and with high loads.

With its carbon cord, it is the ideal alternative to drives with roller chains.

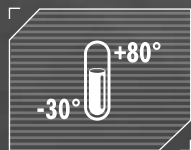
It runs in **optibelt ZRS DC** timing pulleys and in the comparable other brand timing pulleys CTD and PC.





optibelt DELTA CHAIN Carbon

# CHARACTERISTICS



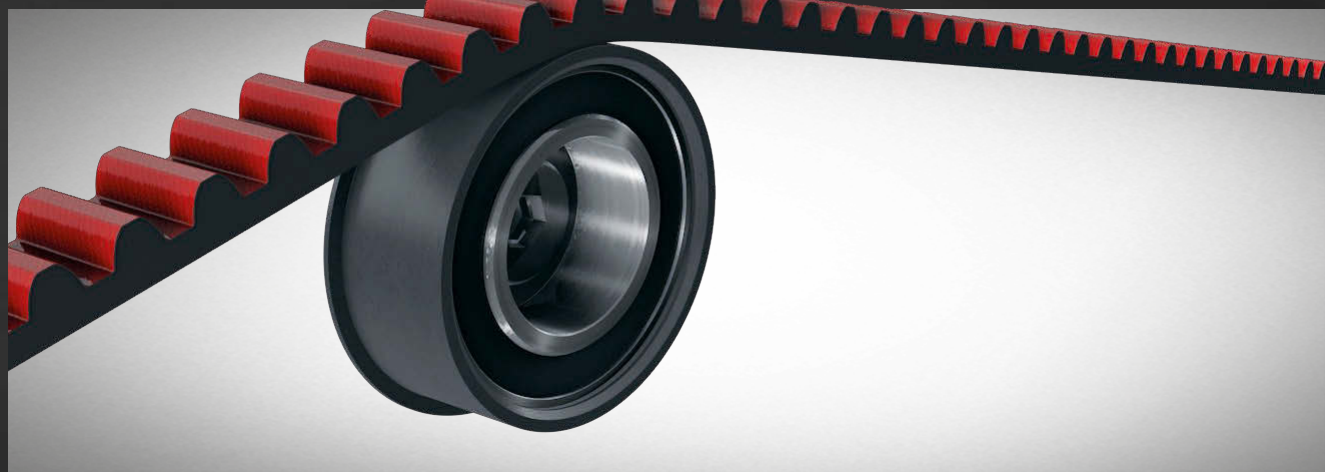
## BEST TEMPERATURE RESISTANCE

thanks to the use of cast polyurethane – operating temperatures of approx. -30°C to +80°C.



## UNRIVALLED IMPACT STRENGTH

due to a combination of hard polyurethane and hard-wearing carbon fibres.



## OPTIMISED TOOTH SHAPE

for smooth tooth meshing and uniform distribution of force across all the tooth profiles ZRS DC, CTD and PC.

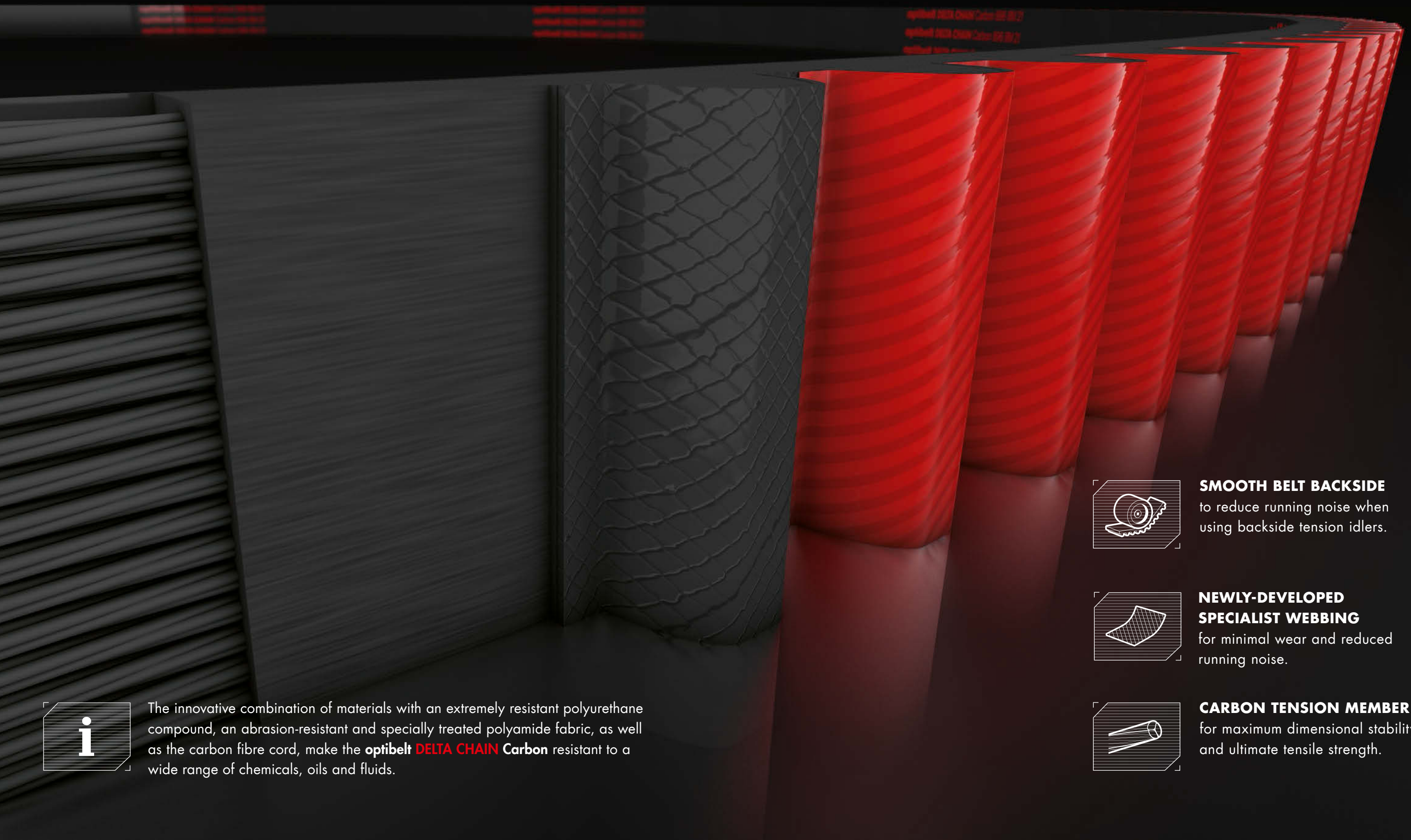


## HIGH LEVEL OF RELIABILITY

in the event of any adverse effects resulting from oil, chemicals or ozone, for example.



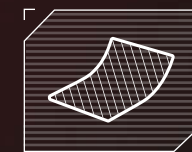
# OUTSTANDING UNDER EXCEPTIONALLY TOUGH CONDITIONS, TEAR-RESISTANT AND DURABLE



The innovative combination of materials with an extremely resistant polyurethane compound, an abrasion-resistant and specially treated polyamide fabric, as well as the carbon fibre cord, make the **optibelt DELTA CHAIN Carbon** resistant to a wide range of chemicals, oils and fluids.



**SMOOTH BELT BACKSIDE**  
to reduce running noise when using backside tension idlers.



**NEWLY-DEVELOPED SPECIALIST WEBBING**  
for minimal wear and reduced running noise.

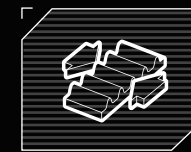


**CARBON TENSION MEMBER**  
for maximum dimensional stability and ultimate tensile strength.





**DOUBLE THE POWER TRANSFER**  
compared with high-performance rubber  
timing belts — especially at high torques  
and dynamic stresses.

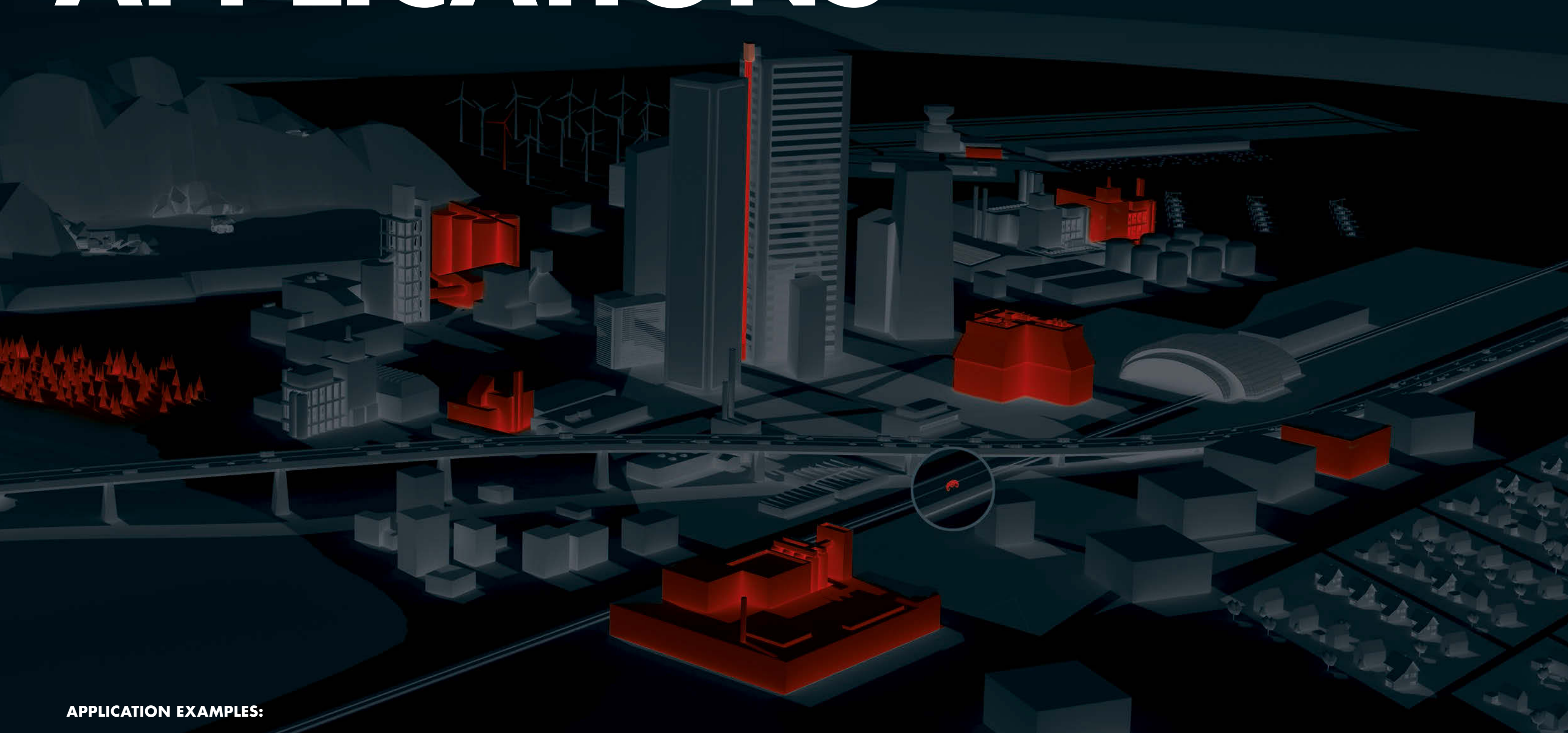


**HALF THE OVERALL WIDTH**  
with the same power transfer compared  
with high-performance rubber timing belts  
= optimum cost-efficiency.



optibelt DELTA CHAIN Carbon

# APPLICATIONS



## APPLICATION EXAMPLES:



WOODWORKING



PAPERMAKING



TEXTILE MAKING



WINDING



TOOLING



MOTORCYCLE AND  
BICYCLE TECHNOLOGY

**OPTIBELT GmbH**

Corveyer Allee 15  
37671 Höxter  
GERMANY

**T** +49 (0) 52 71-6 21

**F** +49 (0) 52 71-97 62 00

**E** [info@optibelt.com](mailto:info@optibelt.com)



[www.optibelt.com/delta-chain](http://www.optibelt.com/delta-chain)

