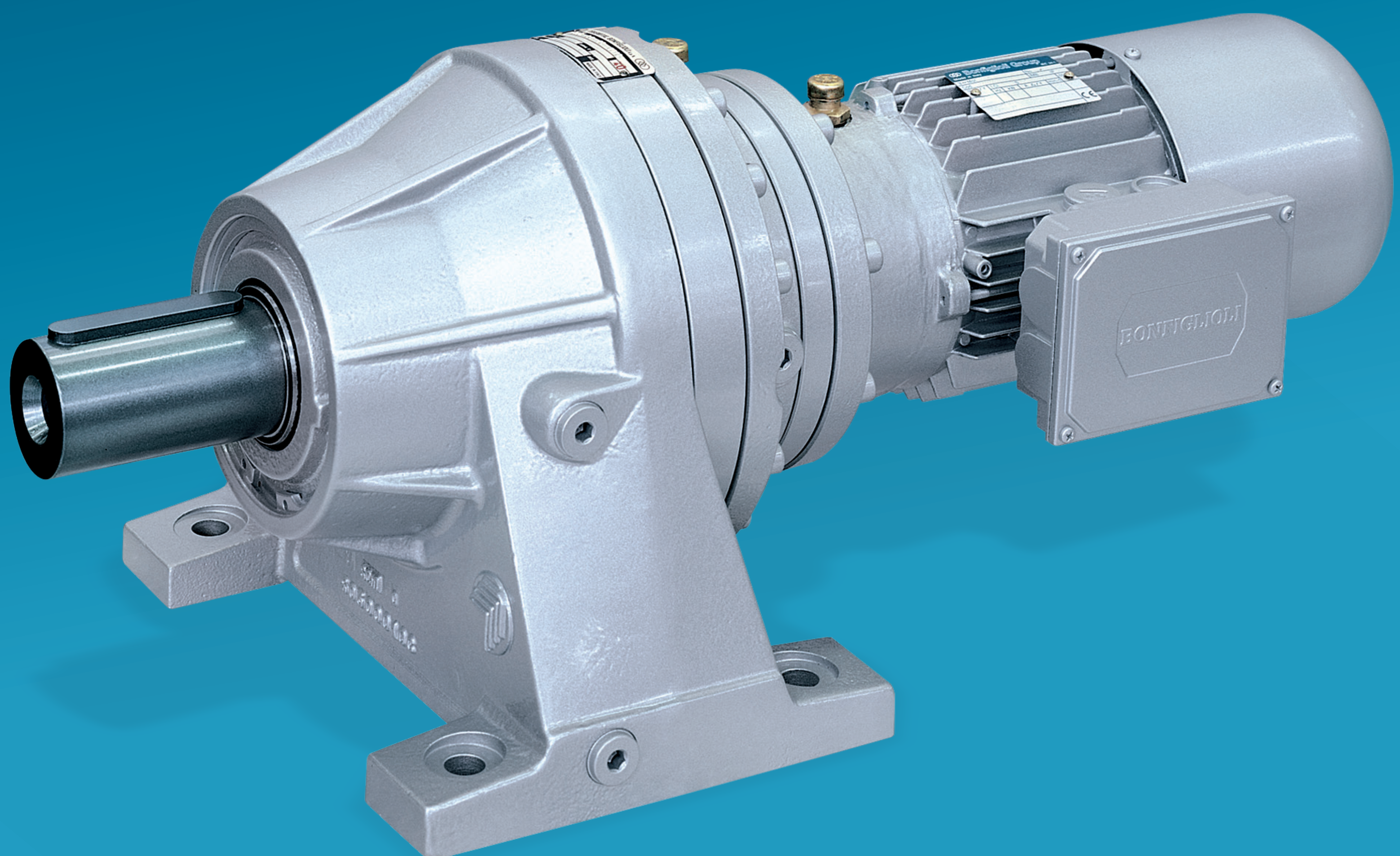


# 300 series

## Planetary drives



### 300 series

A powerful solution to heavy duty drive needs.

Compact, and yet extremely powerful, are the units of the 300 series. Their planetary drive train makes them the ideal choice for all the severe duty applications where shock loadings and impacts are more the rule than the exception. The product configuration is highly versatile, due to several options as far as the mounting, the gear layout, the output shaft and the motor interface. All features are available for each of the 18 closely spaced frame sizes, spanning over the 1000 - 1100000 Nm torque range.

Finding the perfect match to any drive problem is therefore more than a wish, it is something users can safely rely on - always.

[www.bonfiglioli.com](http://www.bonfiglioli.com)

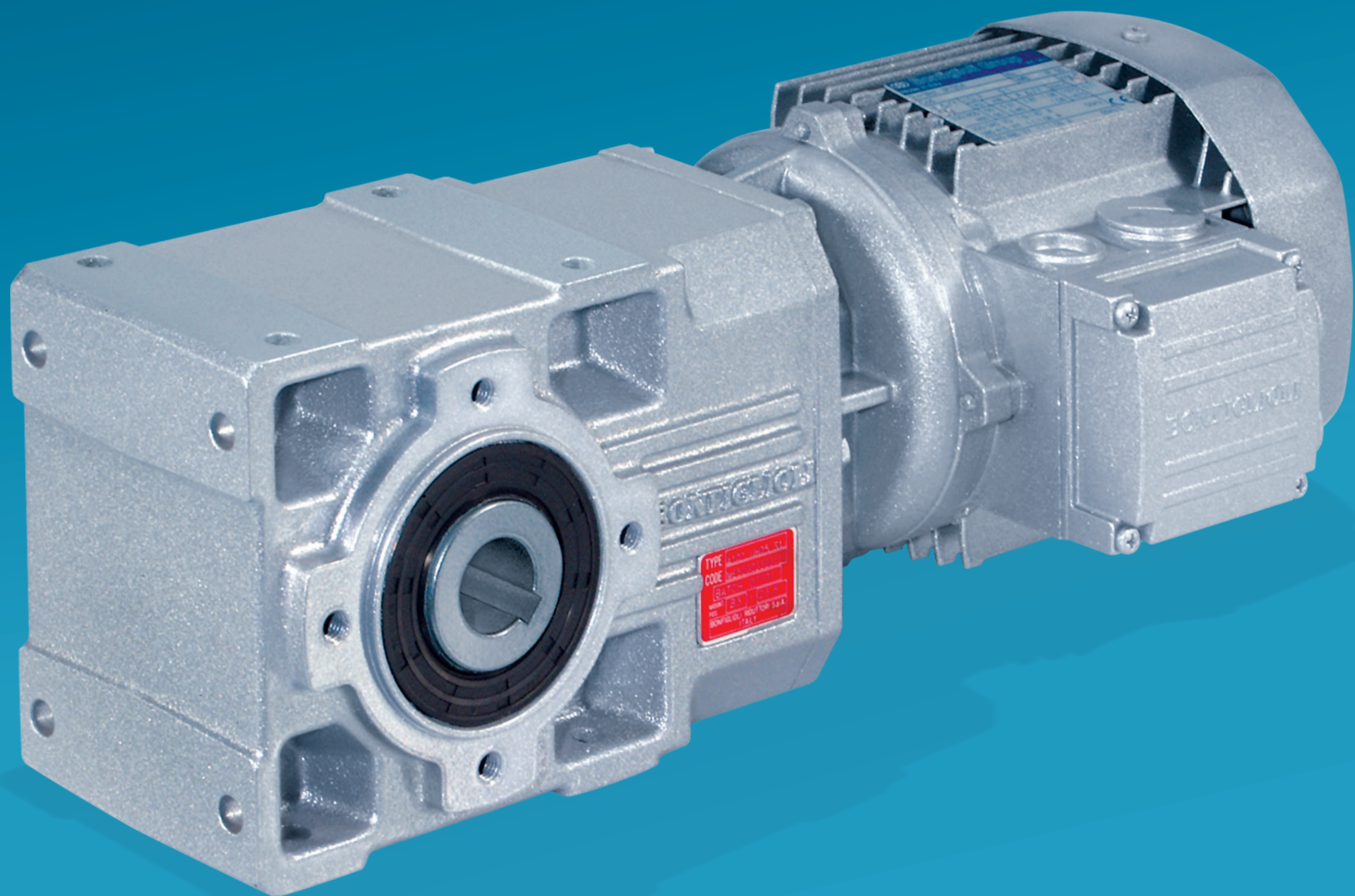
**Torque range**  
1000 ... 1100000 Nm

**Mechanical rating ( $n_1 = 1400 \text{ min}^{-1}$ )**  
up to 450 kW

**Gear ratios**  
3.4 ... 5000



# A series Helical-bevel gearmotors



## A series

When efficiency and versatility meet each other.

The A series is the first product to prove equally good in regard to efficiency and versatility within a highly competitive context, both performance- and price-wise.

**Torque range**  
100 ... 14000 Nm

**Mechanical rating ( $n_1 = 1400 \text{ min}^{-1}$ )**  
0.22 ... 150 kW

**Gear ratios**  
5.4 ... 1715



# F series

## Shaft mounted gearmotors



### F series

Ruggedness and effectiveness to the state-of-the-art.

No better, easier and neater installation than with a shaft mounted unit of the F series. Lightweight and performing, an F unit is the dependable drive for all the material handling applications.

**Torque range**  
100 ... 14000 Nm

**Mechanical rating ( $n_1 = 1400 \text{ min}^{-1}$ )**  
0.22 ... 150 kW

**Gear ratios**  
5.4 ... 1715